

Sizes in cm



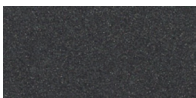
Materials:

Cast iron monolith with anti-rust protection painted. Ductile cast iron grate painted supported by a hotdip galvanised steel frame that is flush with the ground and the same size as the water collection box.

One-inch cast polished brass spout with Presto model push-button.

Pressure regulator and timed flow control included (optionally an anti-ice valve can be incorporated).

Finishes:



Oxiron

Galvanised

*The colors shown are merely indicative and may differ from reality. (Other colors available to order)

**See special finishes for marine environments

Weight (kg):

122

Installation and maintenance:

Anchored using four bolts, 10 cm below the ground.

For temperatures $\leq 0^{\circ}\text{C}$, we recommend turning off the water and draining the circuit to avoid freezing and breakage.

Delivered unassembled and packaged in two parts: monolith with spout and grates with frame according to needs.

Instructions and anchor bolts are included.

No functional maintenance is required, others than standard interior and push-button cleaning.

(For further information log onto urbidermis.com)

Applicable standards: UNE-EN 13369, UNE-EN13198, UNE EN 771-3, UNE 7178, UNE 146507, EHE 08