

With this version, the lamp's features are enhanced with the help of technology. Keeping with the family's warmth and spirit, it features an opal glass shade supported by a beautiful cherry wood structure.

Cestita Batería is a lantern that creates a beautiful ambience anywhere; depicting Chinese shadows in the garden, or emanating light from any corner.

General description:

Cherry wood structure. White opal glass or white opal polyethylene lampshade.

Lithium battery.

Switch incorporated into the luminaire with 3 intensity levels.

Range: 5h on high power / 12h on medium power / 24h on minimum power.

Includes charger.

Battery charging time: 6.5h

Approximate weight (unpacked):

1,3 kg / 2.8 lb

Technical information:

Light source included (dimnable)

LED Module

Rated input wattage: 2,5 W

Operating voltage: 2,9 VDC

CCT: 2.700 K

CRI: 90

Lifetime: 40.000 h

Luminous flux: 313 lm

Built-in dimmable LED.

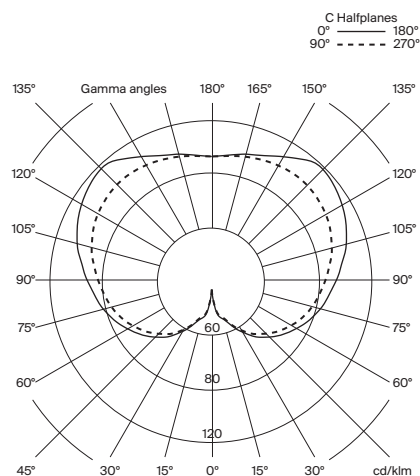
3 light output intensities.

Lamp suitable only for indoor use.

Always use this light source.

Input voltage: 100 ~ 240 Vac.

(50 Hz / 60 Hz). According to destination.



Cestita Batería

Miguel Milá. 2017
Table Lamps

Regulations:

European version
UNE-EN 60598
UNE-EN 55015
UNE-EN 60529

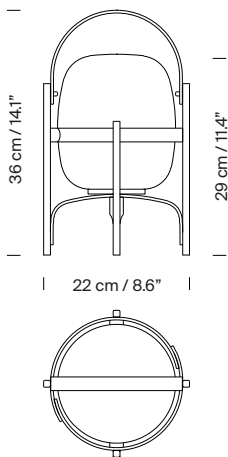
Maintenance:

Clean with a smooth cloth. Do not use ammonia, solvents or abrasive cleaning products.
To prevent degradation of the lamp, it should not be left outdoors permanently.

Others:

The lamp is delivered in one package.
The assembly instructions are delivered with the product.

Model:



Collection:

Table lamps



Cesta



Cestita



Cesta Batería



Cesta Metálica



Cestita Metálica

Pendant lamps



Globo Cesta



Globo Cestita



Wally Cesta



Wally Cestita



Cesta exterior



Cestita Alubat

Wall lamps (Outdoor)

Outdoor lamps