

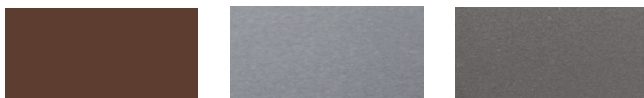
Sizes in cm



**Materials:**

Body made of AISI 316 painted corten stainless steel sheet.  
Anti-splash drain grate and inner tray made of AISI 316 electropolished stainless steel. Brass nozzle with matt chrome finish.  
Standard Presto push button. Pressure regulator and timed flow control included (anti-ice valve supplied separately).

**Finishes:**



Corten

Electropolished

Matt chrome

\*The colors shown are merely indicative and may differ from reality. (Other colors available to order)

\*\*See special finishes for marine environments

**Weight (kg):**

75.

**Installation and maintenance:**

Anchored using mechanical bolts, 10 cm below the pavement.

For temperatures  $\leq 0^{\circ}$  C, we recommend turning off the water and draining the circuit to avoid freezing and breakage.

Delivered assembled and packaged.

Instructions, screws and anchor bolts are included.

No functional maintenance is required, others than standard interior and push-button cleaning.

(For further information log onto [urbidermis.com](http://urbidermis.com))

**Applicable standards:** EN 15975-2, UNE 19703, EN 274-1, ISO 12944, UNE 41510, EN 10088.