

Sizes in cm

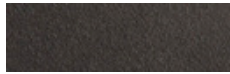


Materials: Powder-coated finish aluminium injection luminaire.
Tempered optical glass seal and vulcanised silicone water-resistant seals.
Anodised aluminium extrusion internal heat sink.

Finishes:



Light grey (RAL 9006)
(Other colors available to order)



Dark grey (RAL 7024)

Sizes (cm): 76 x 28 x 9
Weight (Kg): 15

Installation: Suitable for pole attachment using a range of fastening accessories.
Component delivered in two parts: luminaire and fastening attachments.
(For further information log onto urbidermis.com)

Applicable standards: UNE-EN 60529, UNE-EN 60598, UNE-EN 55015, UNE-EN 61000, UNE-EN 50102, UNE-EN 62031, (ensayos realizados por laboratorio acreditado ENAC, CE), UL 1598, UL 8750, (file E-505192)

Protections: IP66 (protection from dust ingress and high-pressure water jets), *Wet locations*, IK08 (protection against external mechanical impacts)

Electrical rating: Class I (CE)

Light source: High-efficiency optical unit with 48, 72, 88 ó 96 LEDs

Nominal lamp power (W):

48LEDs 48, 68
72LEDs 72, 103
88LEDs 88, 125
96LEDs 96, 137

System power (W):

48LEDs 55, 78
72LEDs 78, 112
88LEDs 92, 133
96LEDs 104, 150

Operating current (mA): 350, 500

Colour temperature (K): 3000 CRI min80, 4000 CRI typ70

Power supply: Constant current driver

Regulation:

1-10V / Dali / Header flux regulation / Programmable automatic regulation

The LED luminaire may be regulated using a number of differing interfaces. These controls allow specific, individual control of light, reducing energy consumption in a sustainable manner.

Power factor (cos φ):

N° LEDs	Operating current (mA)	P (W) 100%, CLO 80%
48	350	0.97
	500	0.98
72	350	0.93
	500	0.96
88	350	0.97
	500	0.98
96	350	0.95
	500	0.97

Operating voltage: 220-240V 50Hz (CE) / 120-277V 60Hz (UL)

Wire:

0,6 / 1 kV 3 x 1.5mm²

0,6 / 1 kV 5 x 1.5mm² (prog.)

Temperature operating range Ta (°C): de -25 a 30 (500mA)

Lifetime: TM21 L70 (10k) > 50.000 h

Thanks to an optimised thermal design, the luminous flux is maintained up to 70% after 50.000 h.

Under exceptional cases when the ambient temperature is excessive, the output may be reduced using the (NTC) active control system that ensures the right operating temperature is maintained.

Light distributions:

Asymmetric: Type II, Type III o Type IV (according to IESNA classification)

Upper Light Output Ratio (FHS%): 0.75

Configurations

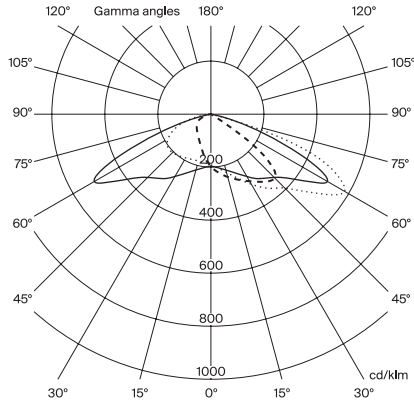
Reference	N°LEDs	Color T° (K)	Operating current (mA)	Lamp power (W)	System power (W)	IESNA TII		IESNA TIII		IESNA TIV	
						Luminaire luminous flux (lm)	Efficacy (lm/W)	Luminaire luminous flux (lm)	Efficacy (lm/W)	Luminaire luminous flux (lm)	Efficacy (lm/W)
CLF48A1xx	48	3000 CRI Imin 80	350	48	55	5872	107	6806	124	6323	115
CLF48B1xx			500	68	78	8084	104	9369	120	8704	112
CLF48A2xx		4000 CRI tip 70	350	48	55	6265	114	7261	132	6746	123
CLF48B2xx			500	68	78	8648	111	10023	128	9311	119
CLF72A1xx	72	3000 CRI Imin 80	350	72	78	8775	113	10170	130	9448	121
CLF72B1xx			500	103	112	12063	108	13979	125	12987	116
CLF72A2xx		4000 CRI typ 70	350	72	78	9363	120	10850	139	10080	129
CLF72B2xx			500	103	112	12905	115	14955	134	13894	124
CLF88A1xx	88	3000 CRI min 80	350	88	92	10491	114	12158	132	11295	123
CLF88B1xx			500	125	133	14378	108	16662	125	15480	116
CLF88A2xx		4000 IRC tip 70	350	88	92	11193	122	12972	141	12051	131
CLF88B2xx			500	125	133	15381	116	17826	134	16560	125
CLF96A1xx	96	3000 CRI min 80	350	96	104	11414	110	13228	127	12289	118
CLF96B1xx			500	137	150	15788	105	18296	122	16998	113
CLF96A2xx		4000 CRI typ 70	350	96	104	12178	117	14114	136	13112	126
CLF96B2xx			500	137	150	16890	113	19574	130	18184	121

*Opal optics: -7.5% luminous flux

Asymmetric
TII Distribution
LOR 100%
ULOR 0%±3%

Max. Intensity 573,26 cd/klm

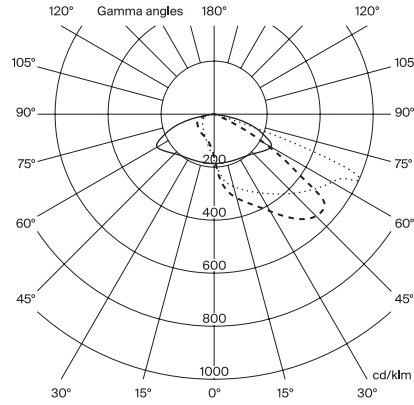
C Halfplanes
0° ——— 180°
90° - - - - 270°
25° ······ 205°



Asymmetric
TIII Distribution
LOR 100%
ULOR 0%±3%

Max. Intensity 593,70 cd/klm

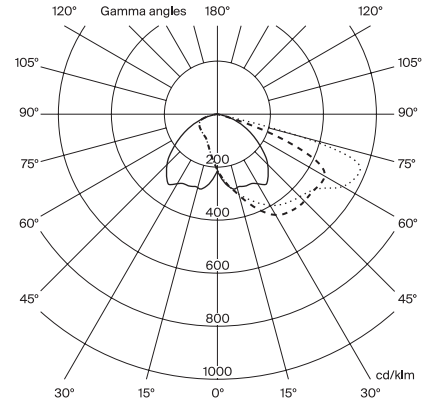
C Halfplanes
0° ——— 180°
90° - - - - 270°
40° ······ 220°



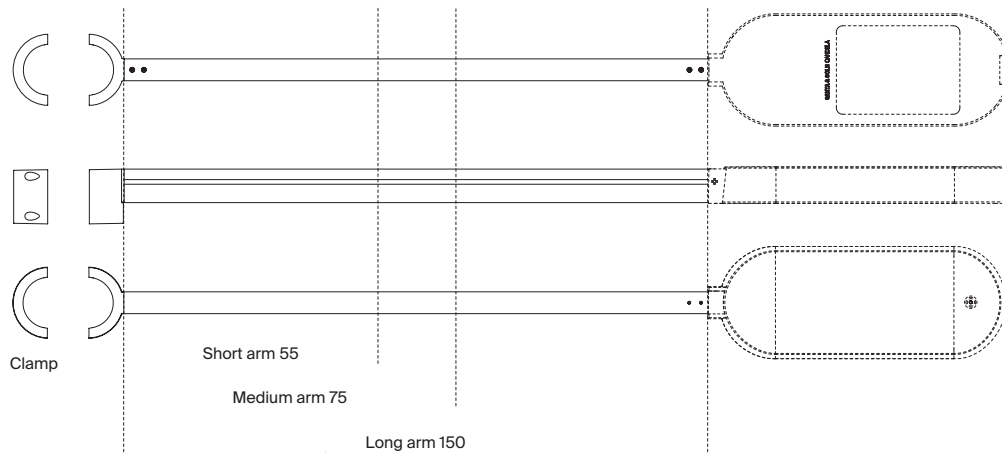
Asymmetric
TIV Distribution
LOR 100%
ULOR 0%±3%

Max. Intensity 579,34 cd/klm

C Halfplanes
0° ——— 180°
90° - - - - 270°
65° ······ 245°



For calculation in ground type II (according to UNE-40) and wind speed of 29 m/s, with soil formed by loose or wet dirt or sand of medium compactness ($E_0 = 4800 \text{ KN/m}^2$), with HM-20 concrete. Non-binding information. We advise to carry out checks for each situation.



Sizes in cm

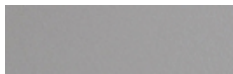


Codes: Clamp CLF06 / Short arm CLF03 / Medium arm CLF04 / Long arm CLF05

Accessories that allow the installation of a single luminaire (using a clamp and arms) or two luminaires at the same height (using two arms) to a large variety of poles (Ø 127mm to Ø129mm).

Materials: Injected aluminium clamp powder-coated finish. Stainless steel screws.

Finishes:



Light grey (RAL 9006)
 (Other colors available to order)



Dark grey (RAL 7024)

Sizes (cm):

Clamp: 25 x 22 x 12

Short arm: 55 x 22 x 12

Medium arm: 75 x 22 x 12

Long arm: 150 x 22 x 12

Weight (Kg):

Clamp: 5

Short arm: 3

Medium arm: 6

Long arm: 10

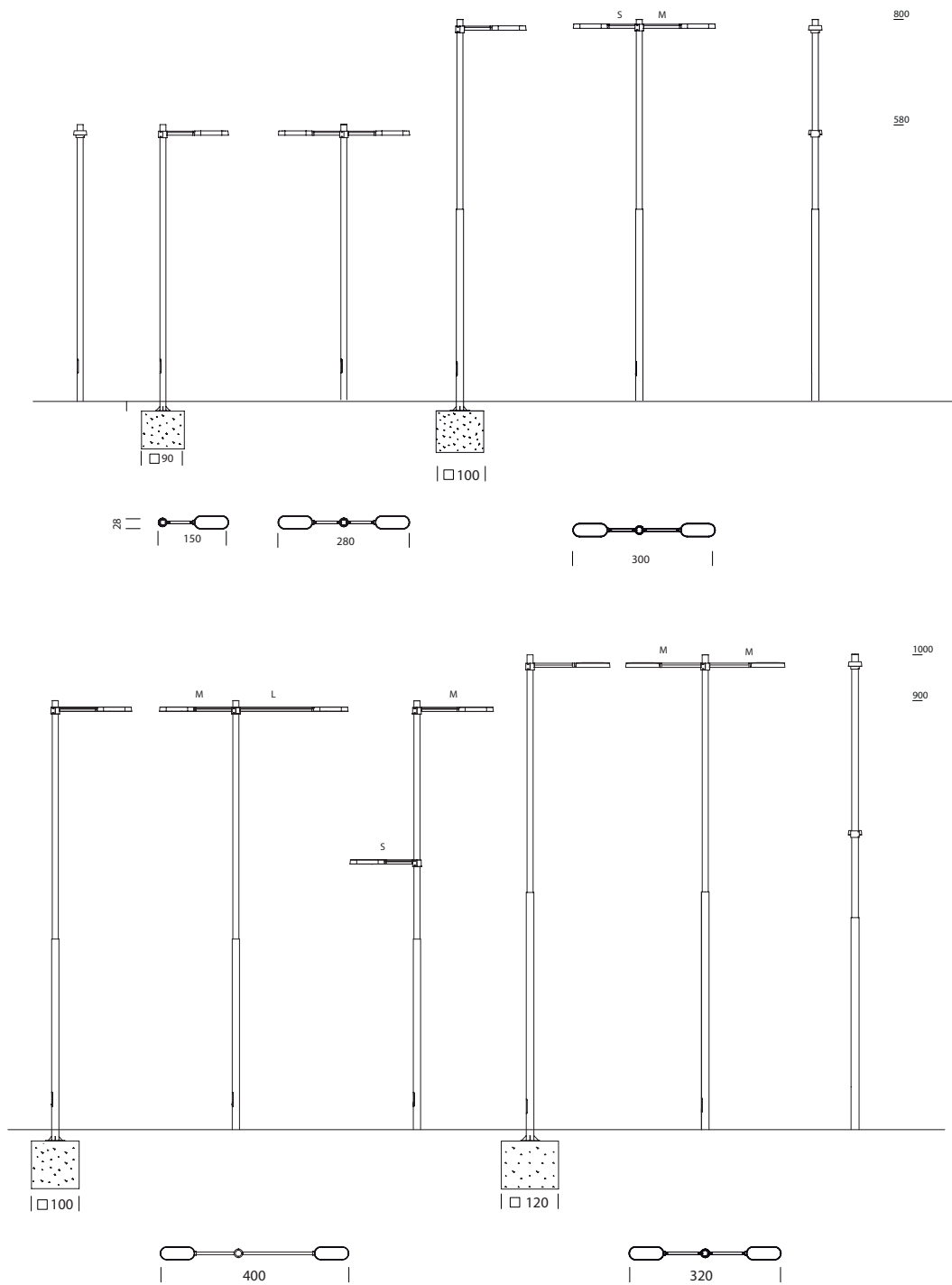
Installation: Suitable for pole attachment using a fastening accessory. It's delivered disassembled.

The element could be combined with luminaire Candela product range.

(For further information log onto urbidermis.com)

*Luminaire not included

For calculation in ground type II (according to UNE-40) and wind speed of 29 m/s, with soil formed by loose or wet dirt or sand of medium compactness ($E_0 = 4800 \text{ KN/m}^2$), with HM-20 concrete. Non-binding information. We advise to carry out checks for each situation.



Sizes in cm



Materials: Poles manufactured in class 1 S-275 JR steel cylindrical tube in one or two segments depending on height. Hot-galvanised painted finish.

Finishes:



Light grey (RAL 9006)
(Other colors available to order)



Dark grey (RAL 7024)

Heights:

One segment (Ø 127 mm): 6.0 m
Two segments (Ø 152 mm / Ø 127 mm): 8.2 m / 9.2 m
Two segments (Ø 168 mm / Ø 127 mm): 10.2 m / 11.8 m

Installation:

Mediante placa base y pernos fijados a dado de cimentación. Empotramiento de 0.2 m.

Distance between bolts:

(6 m) 210 x 210 mm
(8.2 m / 9.2 m / 10.2 m / 11.8 m) 300 x 300 mm

Bolts: (4x) M18 x 500 incluidos

Applicable standards: UNE-EN 40, EN ISO 1461, EN 10025, EN 1090, ISO 12944 (tests carried out by ENAC,CE accredited laboratory)

Configurations

Reference	Total height (m)	Visible height (m)	Outer pole diameter (mm)	Thickness (mm)	Base plate (mm)	Distance between bolts (mm)	Bolts (x4)	Doors	Weights (Kg)	Foundation (xyz) (mm)	N° luminaires allowed
RAF21P	6	5,8	127	3	300x300x10	210x210	M18x500	1	58	900x900x800	1/2
RAF51P / RAF62P	8,2	8	127/152	3	400x400x10	300x300	M18x500	1	92		1/2
RAF81P / RAF85P	9,2	9	127/152	3	400x400x10	300x300	M18x500	1	96		1/2
CNF21P / CNF22P	10,2	10	127/168	5	400x400x10	300x300	M18x500	1	166	1200x1200x1000	1/2
CNF31P / CNF32P	11,8	11	127/168	5	400x400x10	300x300	M18x500	1	190	1200x1200x1000	1/2

For calculation in ground type II (according to UNE-40) and wind speed of 29 m/s, with soil formed by loose or wet dirt or sand of medium compactness ($E_0 = 4800 \text{ KN/m}^2$), with HM-20 concrete. Non- binding information. We advise to carry out checks for each situation..