

# Bilateral

Bench  
2005

## General Description

Structure, arms and supports of the slats in 8mm folded steel sheet, with anti-rust protection and powder painted black.

Seat with or without back with solid wood slats of 30/40 x 120 mm at the ends and the rest of 40 x 60 mm. Manufactured in two lengths of tropical wood with FSC Pure certification and with oil in 2 components or three layered water varnish. Thanks to its modular character, this element accepts numerous combinations.

## Approximate Weights

1 section without back	49 kg
1 section with back	61 kg
2 sections without back	104 kg
2 sections with back	116 kg
2 sections with 1 back	110 kg
3 sections with back	166 kg
3 sections with two inverted backs at the ends	161 kg



## Securing

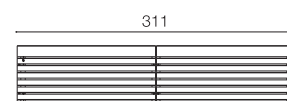
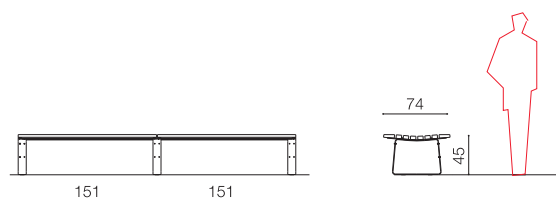
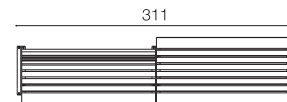
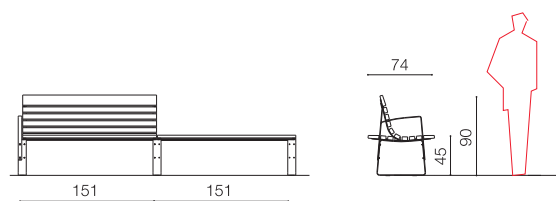
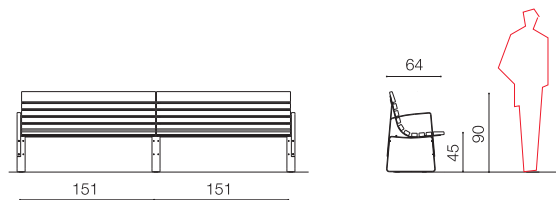
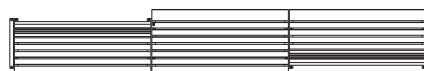
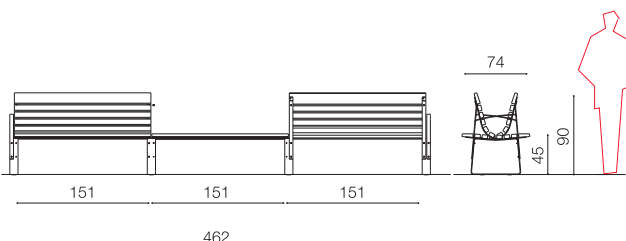
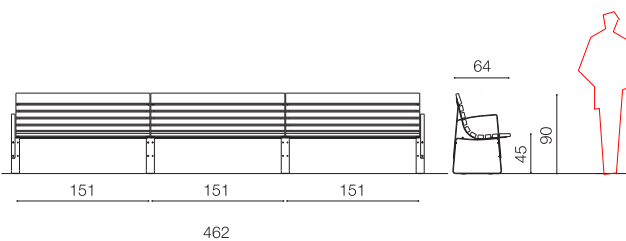
The securing screws of the slats and sheets are in steel treated with anti-rust protection.

The bench is secured to the paving with two stainless steel screws per structure.

The bench is delivered dismantled. The assembly instructions are enclosed with the elements.

## Maintenance

Does not require functional maintenance, unless it is desired to conserve the original colour of the wood.



# Bilateral

Bench  
2005

## Slats of Tropical Wood

### Material

Tropical wood from the west, centre and east area of Africa or Central America.

The wood is obtained fulfilling all the legal and environmental regulations of the country of origin, ensuring the sustainability of the forests and avoiding the environmental impact.

This wood does not come from primary forests.

### Colour

The sapwood varies from yellow-white to pinkish white and the heartwood from yellowish dun to reddish dun.

### Physical Properties

Size of the grain	coarse
Density	890-960 kg/m <sup>3</sup>
Contraction	Moderately nerved

### Contraction coefficients: total (unitary)

Volumetric	13.7-14.5% (0.53-0.67)
Tangential	8.3-9.2% (0.25-0.33)
Radial	5.1-5.4% (0.14-0.20)

## Mechanical Properties

### Wood free from defects

Static flexion	120-177 N/mm <sup>2</sup>
Modulus of elasticity	13000-19000 N/mm <sup>2</sup>
Axial compression	75-86 N/mm <sup>2</sup>
Perpend. compression	17 N/mm <sup>2</sup>
Shear	10.0 N/mm <sup>2</sup>
Dynamic flexion	5.9-8.9 J/cm <sup>2</sup>

## Protective Treatment

To protect the wood an oil in 2 components is used which inhibits the appearance of the tannin or a three layered water varnish finish to conserve the colour of the wood for a period of time which depends on the climatic conditions and which requires maintenance.

There are different types of FSC certified tropical wood. This type is indicated by way of example.

