

## 108 Bench

Enric Batlle, Joan Roig. 2007

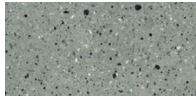
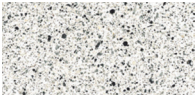
urbidermis  
SANTA & COLE



### Materials:

Bench made from architectural mass-coloured concrete with waterproof exposed aggregate finish. Optional antiicing and/or anti-graffiti treatment.

### Finishes:



White

Grey

\*The colors shown are merely indicative and may differ from reality. (Other colors available to order)

\*\*See special finishes for marine environments

### Weights (kg):

0,48 m bench without backrest: 212.

0,48 m bench with backrest: 400.

1,50 m bench low wall: 1060.

1,50 m bench barrier: 910.

1,50 m bench low wall barrier: 734.

1,50 m bench without backrest: 644.

1,50 m tier: 423.

1,50 m bench with backrest: 1232.

1,20 m high step: 346.

1,20 m low step: 173.

### Installation and maintenance:

Surface fixation by means of two anchor bolts sunk into holes previously drilled into the pavement and filled with epoxy resin, quick-setting cement or similar.

Delivered packaged. Instructions are included.

No functional maintenance is required.

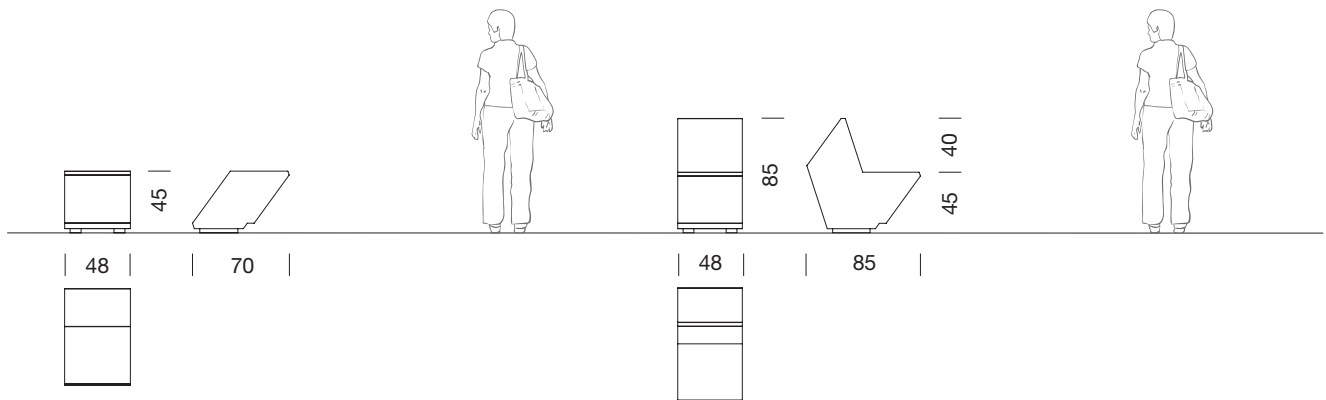
(For further information log onto [urbidermis.com](http://urbidermis.com))

**Applicable standards:** UNE-EN 13369, UNE-EN13198, UNE EN 771-3, UNE 7178, UNE 146507, EHE 08.

**108  
Bench**

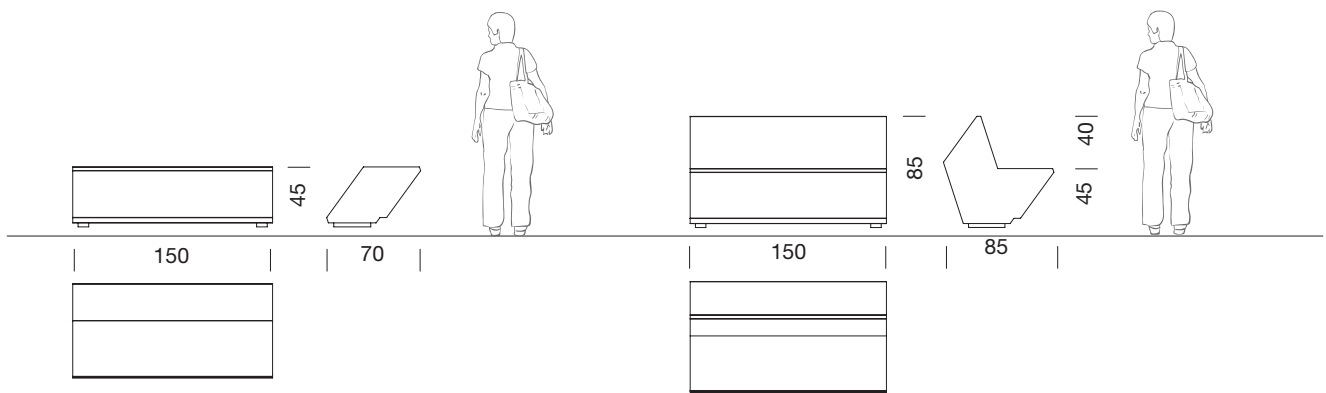
Enric Batlle, Joan Roig. 2007

**urbidermis  
SANTA & COLE**



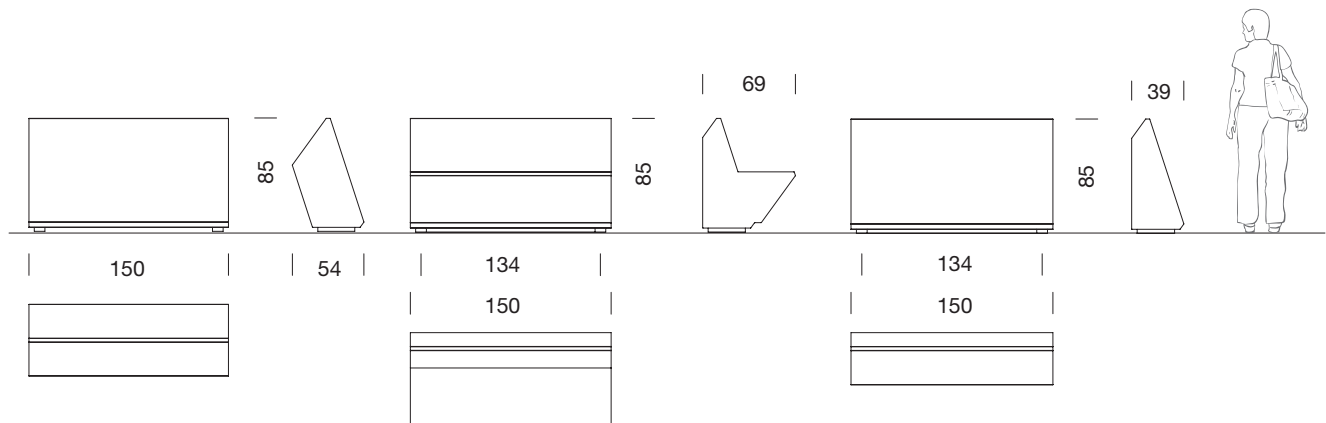
108 bench without backrest 0.48 m

108 bench with backrest 0.48 m



108 bench without backrest 1.50 m

108 bench with backrest 1.50 m



108 Tier of 1.5 m

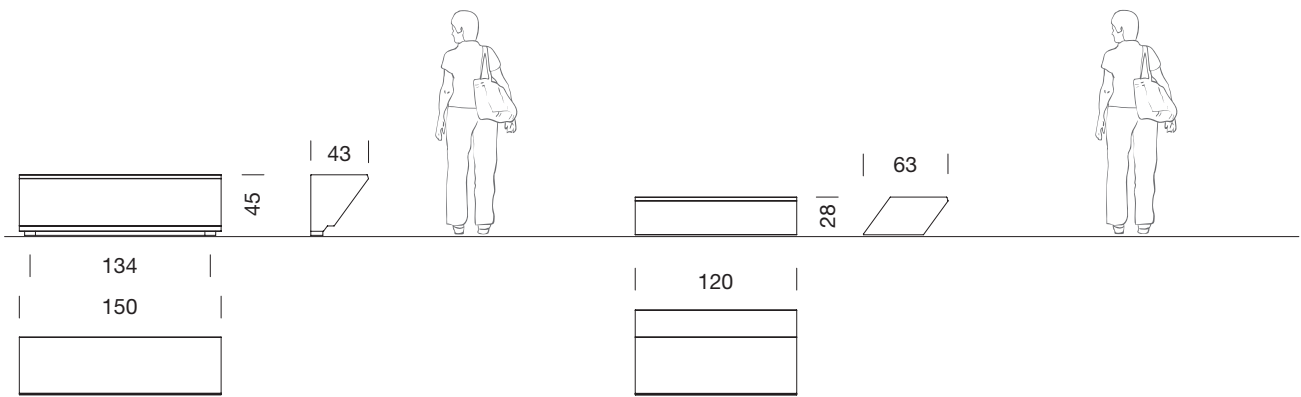
Low wall bench 108 of 1.5 m

108 barrier of 1.5 m

**108  
Bench**

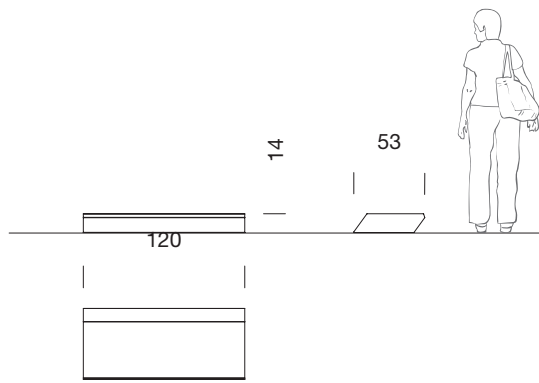
Enric Batlle, Joan Roig. 2007

**urbidermis  
SANTA & COLE**



108 Low wall barrier of 1.5m

108 High step of 1.2 m



108 Low step of 1.2 m

Sizes in cm