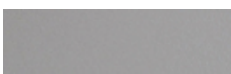


Sizes in cm

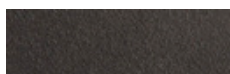


Materials: Poles manufactured in class 1 S-275 JR steel cylindrical tube, in one or two segments depending on the height. Hot-galvanised painted finish.

Finishes:



Light grey (RAL 9006)
 (Other colors available to order)



Dark grey (RAL 7024)

Heights:

One segment (Ø 127mm): 4.4m / 5.2m / 6.0m

Two segments (Ø 152mm / Ø 127mm): 7.8m / 9.4m

Affixing:

By means of a base plate and J bolts fastened to a foundation block. Build in 0.2 m.

Spacing between bolts:

(4.4 m / 5.2 m / 6.00 m) 210 x 210 mm

(7.8 m / 9.4 m) 300 x 300 mm

Bolts: (4x) M18 x 500 included

Configurations

Referencia	Altura total (m)	Altura vista (m)	Diámetro exterior columna (mm)	Espesor (mm)	Placa base (mm)	Distancia entre pernos (mm)	Pernos (x4)	Portezuela	Peso (Kg)	Cimentación (xyz) (mm)	Nº luminarias admitidas
ARF14P	4,4	4,2	114,3	3	300x300x8	210x210	M18x500	1	44	650x650x600	1
ARF25P	5,2	5,0	127	3	300x300x10	210x210	M18x500	1	50	650x650x600	1/2
ARF35P / ARF36P	6,0	5,8	127	3	300x300x10	210x210	M18x500	1	56	800x800x700	1/2
ARF45P / ARF46P / ARF48P	7,8	7,6	127/152	3	400x400x10	300x300	M18x500	2	84	900x900x700	2/3
ARF45P / ARF56P / ARF57P	9,4	9,2	127/152	3	400x400x10	300x300	M18x500	2	98	900x900x700	2/5

Para cálculo en terreno tipo II (según UNE-40) y viento de 29m/s, con suelo formado por arena suelta o húmeda de compacidad media (EO = 4800 KN/m²) y cimentación de hormigón tipo HM-20. Información no vinculante. Aconsejamos realizar comprobaciones en cada situación.