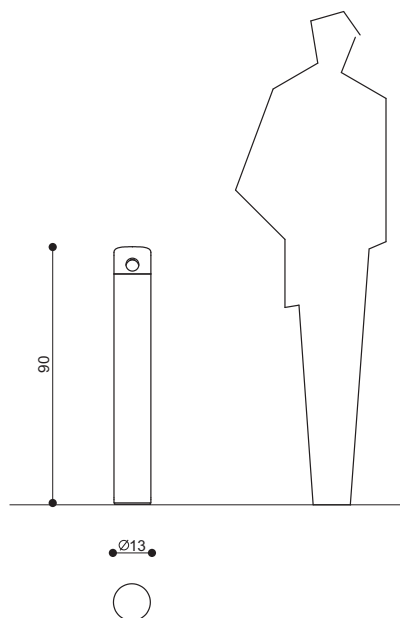


CUERPO / BODY			
Peso / Weight		10,2 Kg	
Material / Material	Altura / Height	Acabado / Finish	Sección / Section
Inox AISI 304	90 cm	Pulido Polished	Ø13 mm



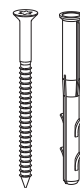
SUMINISTRO SUPPLY LIST



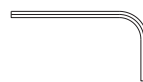
x1 Cenicero / *Ashtray*



x3 DIN 7991 M6x16 INOX



x3 S10R-100



x1 Llave / Key DIN 911 N° 6



x1 Llave / Key DIN 911 N° 4



SANTA & COLE

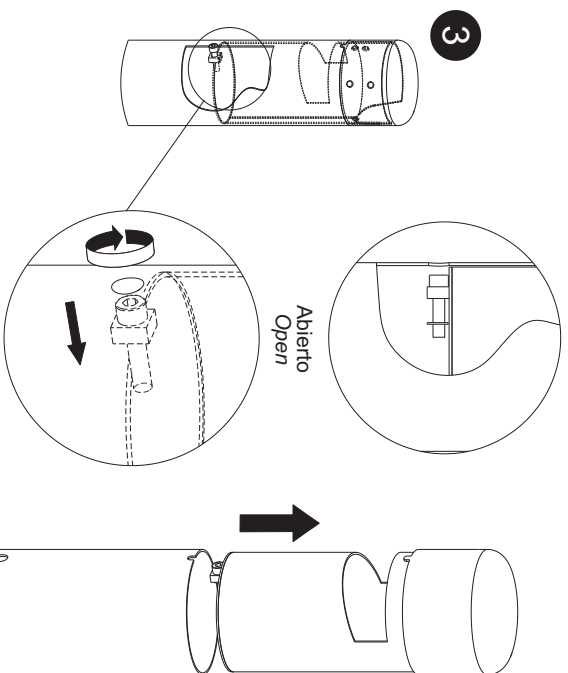
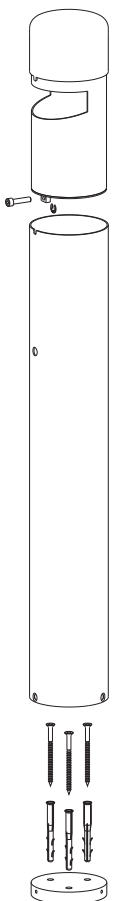
HUMO

diseño/design by
Equipo Santa & Cole
2007

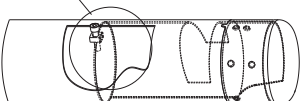
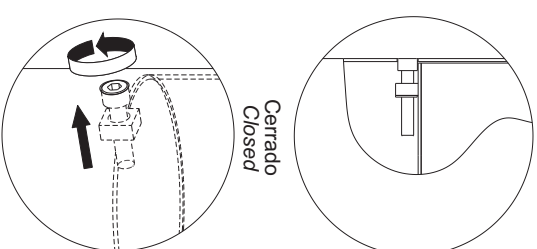
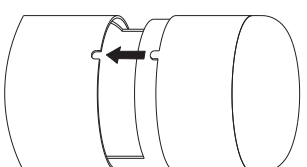
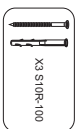


instrucciones de montaje
assembly instructions

28/06/2010



Apretar el tornillo para poder extraer la parte superior del cenicero
Tighten the screw to remove the top of the ashtray



3 Taladros Ø10x100
 3 Drills Ø10x100

Desenroscar el tornillo hasta enrasarlo con el tubo
 para dejar bien sujeta la parte superior del cenicero
*Unscrew the screw until the exterior tube surface
 is flush in order to subject the top of the ashtray*