



# Press Kit

**Maison & Objet 2015**

Singapore



**March 10<sup>th</sup> - 13<sup>th</sup>**

**Level 0 Stand B8**

**CONTACT US**

Santa & Cole

Press Department

[prensa@santacole.com](mailto:prensa@santacole.com)

+34 938 619 100

# Excite with simplicity

The Barcelona editing company is participating in the second edition of Maison&Objet ASIA 15, new and unique annual event that aims to decode new trends, reveal talent and promote creativity through an accurate selection of its exhibitors.

In Singapore, Santa & Cole is presenting good designed and timeless objects which take full advantage of the potential of LED technology. Among other novelties, stands out HeatHad system, winner of a Red Dot Award as well as Gold Delta Adi-Fad Award in 2013, M64 or Sexta12 by Miguel Milá and a new collection of classics- Diana, Pie de Salón and Cirio- with golden finishes. The exhibition will be completed by some of Santa & Cole renowned classics such as: Cesta, Cestita and TMM from Miguel Milá and the highly recognized Tripode family, Cirio and Disco.

Objects in which a particular way of living and of feeling at ease can be recognized, all of them sensitive to the rhythm of life in the 21<sup>st</sup> city.

Welcome to our 'home'. We enjoy what we do

## We are editors

Publishing means making public a work that has usually been created by someone else, an author. We believe that a publisher's greatness lies not in having a powerfully large company but in the merits of their catalogue. Publishing is our raison d'être: considering, selecting, daring and offering sensible products and services to our contemporaries.

The overarching hypothesis to enable publishing is that designs can be protected as recognised and guaranteed intellectual property, rather like a book publisher but with objects, however large they may be. We protect the designer's original value and intellectual property rights from intrusive third parties, always and all over the world.

To date, over eighty authors have formed part of Santa & Cole at one time or another.

# Our headquarters

## Belloch, a knowledge park

Santa & Cole's head office is an exceptional property with over 130 hectares of land in Belloch, 30 km north of Barcelona. From there we seek to promote the development of a knowledge park focusing on communications and industrial design. Internationally publishing and protecting high quality original knowledge has become the main thrust of our work.



# Golden Collection

Characteristic of Renaissance art, the Art Deco style of the 1920's, and Hollywood in the 1940's and 50's, the golden glow shines in the most flourishing periods of history.

Santa & Cole offers a collection of products with golden glows that uphold the concept of elegant, unostentatious luxury, reminiscent of those particularly stimulating eras.

**Pie de Salón**

Jaume Sans, 1964.

**Diana Menor and Diana Mayor**

Federico Correa, Alfonso Milá,  
Miguel Milá, 1995.

**M64**

Miguel Milá, 1964.

**Cirio**

Antoni Arola, 2010.

**Nimba**

Antoni Arola, 1997.

**Sexta 12**

Antoni Arola, 1997.



# M64

## *HeadHat system*

Miguel Milá

Designed in 1964 / Reedited in 2014



An exponent of a time when Spanish industrial design was just establishing itself as a professional discipline, this lamp was awarded the Gold Delta in 1964, the highest distinction for a product in Spain. The jury that year was chaired by leading Swiss designer and artist Max Bill, a champion of the Ulm School, who eloquently promoted it to the ultimate award. As a result, Miguel Milá, the then young designer of the lamp, affectionately called it the MaxBill lamp, though today it is known as the M64.

To celebrate its 50th anniversary, Santa & Cole is now reediting it in an LED version, with minimal changes to the neck to fit the HeadLed capsule, which affords greater light efficiency and quality. The M64 comes in four finishes (white, black, bright brass and polished aluminium), once again demonstrating the exquisite timelessness of Miguel Milá's designs.



Original Max Bill - Delta de Oro.  
ADI FAD 1964



HeadLed - Delta de Oro. ADI FAD 2013 /  
Reddot 2013

## Press Release

Press Department  
prensa@santacole.com  
+34 938 619 100

Download press kit and high res photos at:  
[www.santacole.com/press\\_kit](http://www.santacole.com/press_kit)



*“For a design to become a classic you need a good idea  
and simple execution.”*

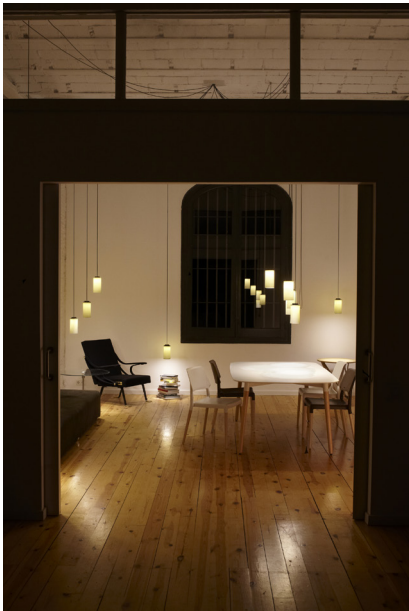
— Miguel Milá

# Cirio Múltiple

## *HeadHat system*

Antoni Arola  
2010

This Cirio lamp variation enables the candles to be freely placed wherever they are needed. Eight to twelve points of light come from one ceiling plate and are long enough to cover large halls or stairways, creating various atmospheres within the same space. Combining the shades can give differing tones of light to the lamp in three options: handmade porcelain, polished brass and white opal glass.



# Ceramic Hat / Metallic Hat

## HeadHat system

Santa & Cole Team  
2013



Flexible system of pendant lamps using shades (hats) of differing sizes and materials that give multiple uses to an ingenious light capsule (head), forming a simple system with a minimalist and flexible design that gives great warmth to LED lighting. Its interchangeable, modular components and technology make this a product with a long life cycle and easy to recycle.



HeadLed



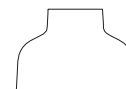
Cirio



Ceramic Hat S



Ceramic Hat L



M64



Metallic Hat S



Metallic Hat M



Metallic Hat L

# Cesta family

Miguel Milá  
1962

A cult lamp for many, and more popular than ever among upcoming generations, the Cesta family grew quickly as of its creation in 1962 by designer Miguel Milá. Since then, Cesta, Cestita and Wally have become world icons of Mediterranean warmth and wellbeing.



*"I am delighted to see my work lasting so long! It is hugely rewarding to have a lamp that is almost 50 years old and that is kept alive not because of loyalty but because young people are buying it."*

Miguel Milá

# Moaré

Antoni Arola  
2003

The superimposed shades of Moaré cause an optical illusion of asymmetric waters, known as the Moiré effect. Created in 2003, the Moaré series has gradually taken on new formats, supports and colours, currently deploying numerous combinations to satisfy very different needs, from large commercial spaces to private domestic uses.



# AJ Royal

Arne Jacobsen  
1956

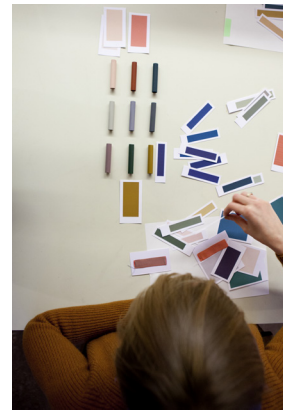
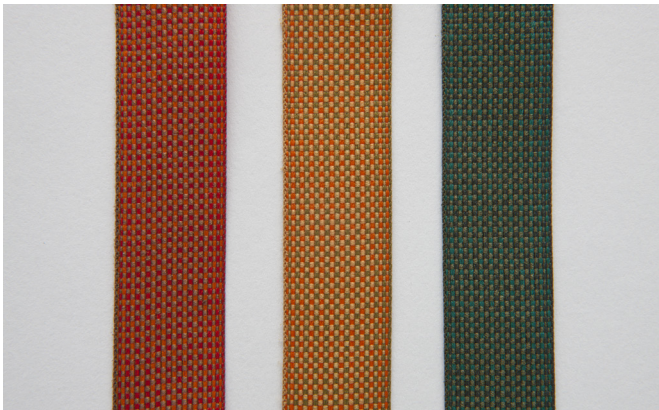
Designed for the Hotel Royal SAS in Copenhagen, this lamp combines bright steel with the linen of an elliptical shade that seems to be floating in mid-air, while its shadow creates the element of gravity that fixes it to the floor.



# Raw Color Ribbons

Raw Color  
2013

This is a collaboration around the colour of light with Daniera ter Haar and Christoph Brach of Raw Color, who share our curiosity and passion for chromatic tones. Theupshot are these new ribbons, each woven from three special yarns giving rise to three new colours (terracotta, mustard and green) available for our entire family of ribbonshade lamps, from the small table lamp to the famous Trípode standard lamp and the giant GT1500 pendant lamp. They are an addition to the three basic colours (cream, red and black) designed by the Santa & Cole Team in 1994.



# Sexta 12

Miguel Milá  
20014

A new version of the recognised Sexta for wide interior spaces.  
A double circle of light divided into twelve 30° sections in a renewal of the iron luminaire tradition. Its illustrious, solid predecessor is the Estadio lamp, also designed by Miguel Milá.



# TMM

Miguel Milá

1961



The most celebrated piece by one of the pioneers of Spanish design, the TMM is an exquisite demonstration of formal serenity and functional efficiency. A cross-shaped base supports a square shaft that turns circular at mid-height, allowing the drum-shaped shade to run along it.



# Disco

Jordi Miralbell, Mariona Raventós

1995

A steel disc hides the light source and diffuses it around the opaque circle. The light is reflected on the wall and creates a halo around the disc, rather like the luminescence of stars during an eclipse.

