



SANTA & COLE

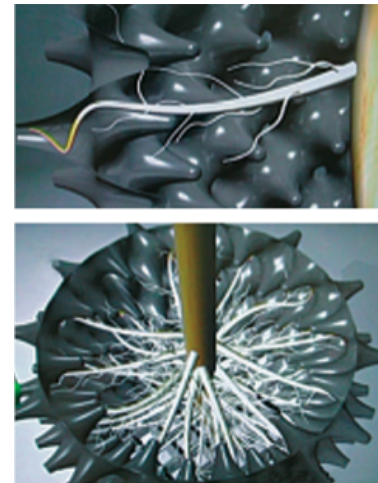
FORESTAL

Santa & Cole Forestry Division

Parc de Belloch
Ctra. C-251 Km 5,6
E-08430 La Roca, Barcelona
Espanya / Spain
tel. +34 938 462 437
fax +34 938 711 767
www.santacole.com

We cannot consider trees to be merely ornamental elements; rather, they form part of our phylogenetic memory. Trees shelter us, they give us freshness, and they give us proportion. In other words, they make us human. In Santa & Cole Tree Nursery Division we began our nursery activity in 2004 with our own plantations and distributing plants cultivated in the most important European nurseries, with the desire to provide the best varieties for each location.

We now use the Air-pots™ cultivation system, which is much more than a simple container, because it carries out the root pruning with air. The plant develops a dense root system and avoids one of the main problems of growing in containers, the circling of the roots. The special shape of the walls leads each root to a hole where the increase in air dehydrates the tip, pruning it and stimulating the branching of the roots. Each new root follows the same path and the process is repeated, so the plant quickly develops a great mass of fibrous roots radially facing outwards.



The main advantage of cultivation in the Air-pot is that a tree grown in it does not require a period of establishment and can continue to develop normally once planted, unlike the conventional systems which need to have been established for between one and three years (depending on size and climate) in order to recover the roots lost. When someone buys a tree, they are buying future, power, what it can become, and this is directly linked to the roots. Because a tree is time which has become matter.

The S&C Tree Nursery is located in an area with ideal climatic characteristics for the cultivation of trees and plants for Mediterranean and continental climates, 30 Km north of Barcelona (Spain). The closeness to the AP-7 motorway and the situation between Girona and Barcelona, 100 Km from the French border, gives our plantations privileged links to southern Europe. Our headquarters, Parc de Belloch, is located in the same enclave, on an estate of almost 125 Ha. which is at the same time the main centre of a knowledge park which accommodates other companies interested in communication and design (see www.belloch.eu). Belloch has extensive farm land, and a well-stocked display area with plants ready to be delivered. Just three kilometres away, the Santa Agnés estate is a copious nursery with young individuals where



SANTA & COLE

FORESTAL

About Santa & Cole Forestal

thousands of trees from more than 70 species and varieties develop on another 33 Ha adjacent to the bed of the River Mogent. They include a species formerly very common in the Iberian Peninsula, the field elm, which in recent years has been affected by a deadly disease, and which made it necessary to seriously reconsider the continuity of its populations. In this respect, in S&C Tree Nursery Division we cultivate exclusively for the Iberian Peninsula the variant *Ulmus RESISTA*® ‘New Horizon’, which is a cultivar obtained by crossing *Ulmus pumila* and *Ulmus davidiana* var. *Japonica* and is resistant to Dutch elm disease, which has caused the loss of the majority of adult European elms. Unlike the other resistant varieties, *Ulmus RESISTA*® ‘New Horizon’ has an ideal structure for urban avenues and streets.

For years S&C Tree Nursery Division has had European MPS certification, with the highest rating (A) for the excellent environmental quality of its nursery management. It likewise collaborates with the Institute for Food and Agricultural Research and Technology (IRTA) of the Agriculture Ministry of the Generalitat (Autonomous Government) of Catalonia in relation to innovation and development of new products and procedures.

To guarantee complete security in the identification and marking of the plant we have developed a traceability control system using microchips which identifies each individual both in the nursery and in its final location, allowing all its associated tasks to be recorded, and aiding its subsequent management at destination.

With the production of almost 150,000 trees in the next four years, with a good root structure and the best possible, graceful, aerial appearance, S&C Tree Nursery Division wants to contribute to a better encounter between Nature and the City for the enjoyment of all the citizens.

Defendemos la propiedad intelectual. *We protect intellectual property.*

SANTA & COLE Neoseries S.L. NIF ES B 63879597. Ctra. C-251, Km. 5,6 Parc de Belloch, E-08430 La Roca, España / Spain. Reg. Merc. Barcelona, tomo 37662, folio 190, hoja nº B 307793